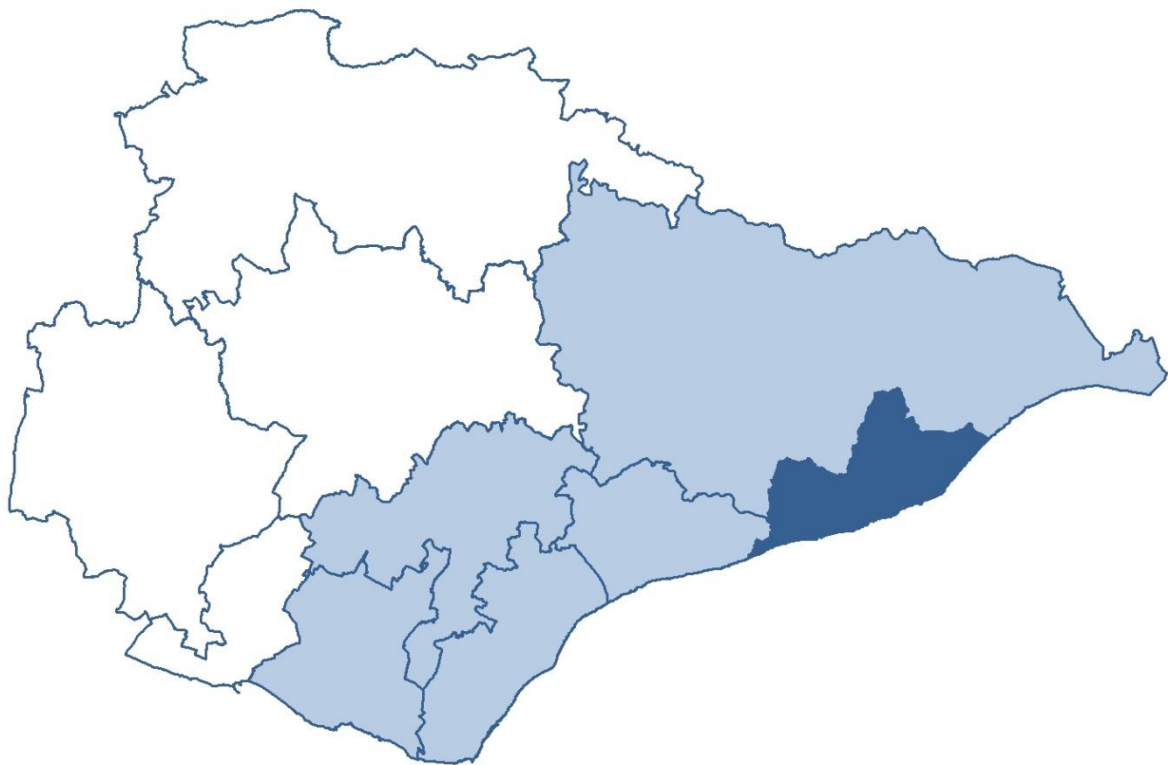


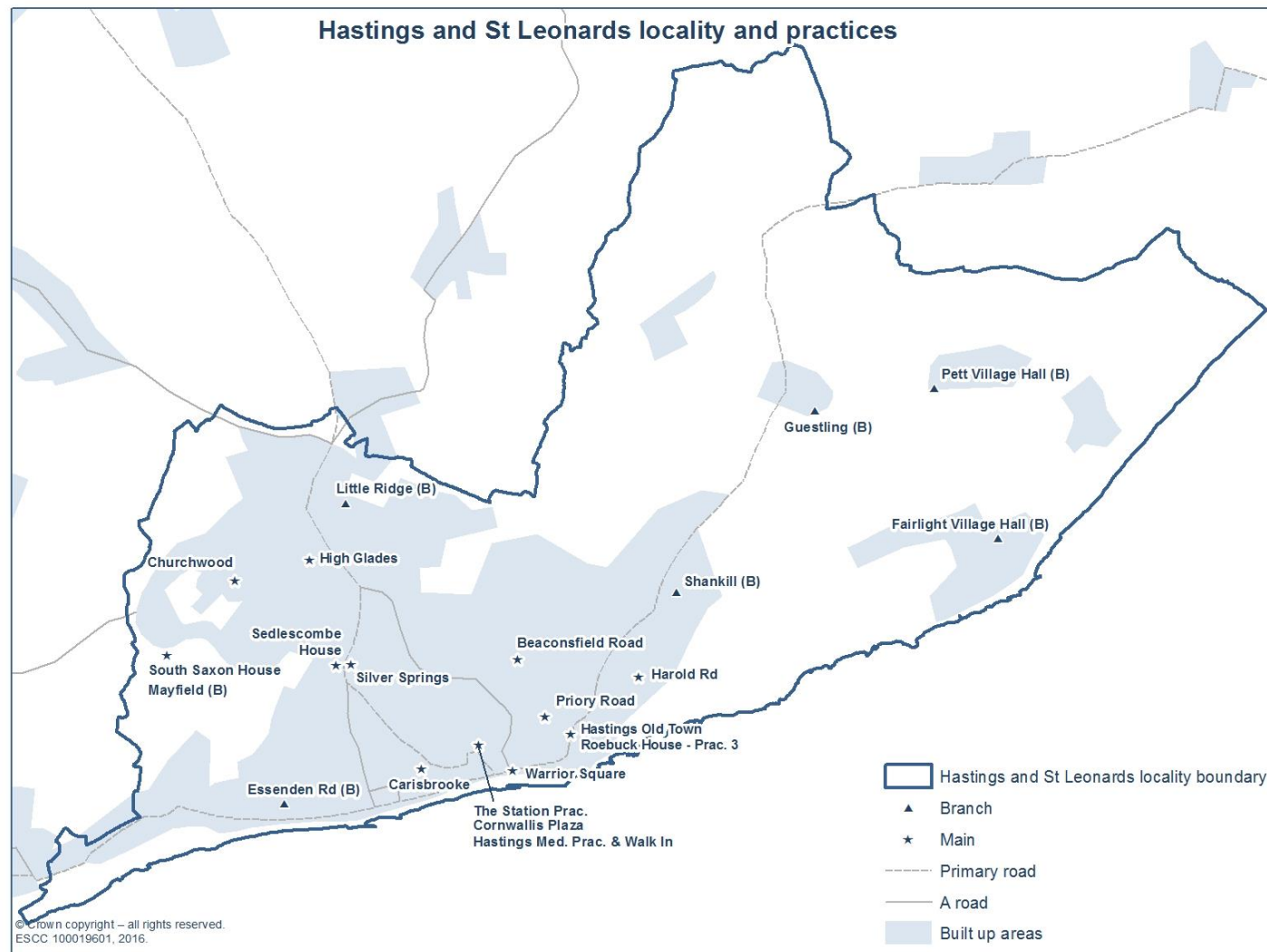
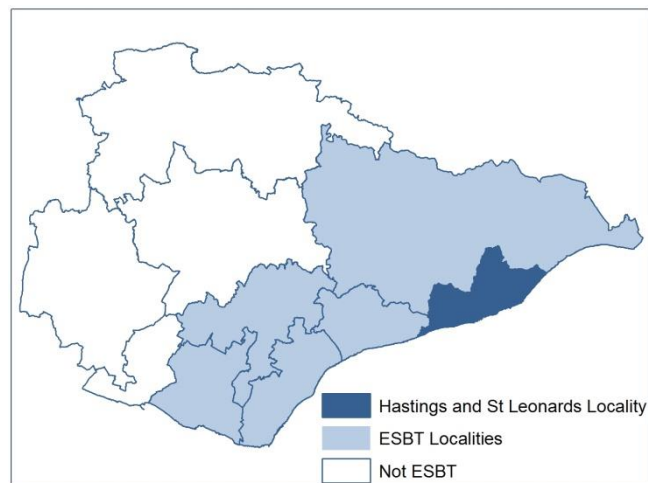


# Hastings and St Leonards Locality Area Summary



**Based on the NHS view of the JSNAA Scorecards 2018  
Produced by East Sussex Public Health**





# Table of Contents

<b>Key statistics .....</b>	<b>5</b>
<b>Introduction .....</b>	<b>6</b>
<b>Population.....</b>	<b>7</b>
<b>Wider determinants.....</b>	<b>9</b>
<b>Overall health status.....</b>	<b>10</b>
<b>Healthy lifestyles .....</b>	<b>10</b>
Pregnancy and infancy.....	10
Physical activity and excess weight.....	10
Smoking.....	10
Alcohol and drug misuse .....	11
Sexual health .....	11
Accidents and injuries .....	11
<b>Health protection.....</b>	<b>11</b>
<b>Disease and poor health.....</b>	<b>12</b>
Mental health and wellbeing.....	12
Circulatory.....	12
Cancer .....	12
Respiratory.....	12
Diabetes.....	13
Other chronic conditions.....	13
Avoidable admissions .....	13
Hospital admissions and attendances .....	13
<b>Social care .....</b>	<b>16</b>
Children's services .....	16

Carers.....	16
Adult social care.....	16
<b>NHS dental services.....</b>	<b>16</b>
<b>GP patient survey.....</b>	<b>16</b>
<b>Appendix 1: Scorecard summary tables.....</b>	<b>17</b>
<b>Appendix 2: Acronyms and abbreviations .....</b>	<b>30</b>

## Key statistics

Key Statistics for Hastings & St Leonards Locality			
Ref	Indicator	Number per year	Value
1.01	GP registered population (count), April 2017	99,674	
1.02	GP registered population aged 0-19 yrs (%), April 2017	22,438	23
1.03	GP registered population aged 20-64 yrs (%), April 2017	57,833	58
1.04	GP registered population aged 65+ yrs (%), April 2017	19,403	19
1.18	Live births per 1,000 women aged 15-44 yrs, 2014-16	1,115	65
2.02	Income Deprivation (as a percentage), from ID 2015 (M)		22
2.04	Children in low-income families (%), Aug 2014 (M)	4,952	28
3.06	Excess weight in 10-11 year olds (%), 2013/14 to 2015/16 (M)	295	33
3.09	GP reported prevalence of smoking aged 15+ (%), 2016/17	16,294	24
4.04	Life expectancy at birth (yrs), 2014-16		79.7
4.05	Life expectancy at age 75 (yrs), 2014-16		11.7
4.06a	All-cause mortality (SMR), 2014-16	1,079	119
4.08a	Mortality from causes considered preventable (SMR), 2014-16	223	127
4.15	GP reported prevalence of dementia (%), 2016/17	935	0.9
4.22	GP reported prevalence of hypertension (%), 2016/17	15,002	15.1
4.25	GP reported prevalence of CHD (%), 2016/17	3,376	3.4
4.28	GP reported prevalence of stroke or TIA (%), 2016/17	2,039	2.1
4.31	GP reported prevalence of atrial fibrillation (%), 2016/17	2,101	2.1
4.33	GP reported prevalence of heart failure (%), 2016/17	914	0.9
4.48	GP reported prevalence of asthma (%), 2016/17	5,609	5.6
4.51	GP reported prevalence of COPD (%), 2016/17	2,607	2.6
4.56	GP reported prevalence of diabetes aged 17+ (%), 2016/17	5,467	6.8
4.59	GP reported prevalence of epilepsy aged 18+ (%), 2016/17	796	1.0
4.61	GP reported prevalence of CKD aged 18+ (%), 2016/17	3,005	3.8
4.64	GP reported prevalence of learning disabilities aged 18+ (%), 2016/17	652	0.8
4.65	GP reported prevalence of palliative care needs (%), 2016/17	379	0.4
4.71a	First outpatient attendances (SAR), 2016/17	42,190	106
4.73a	A&E (type 1) attendances (SAR), 2016/17	29,019	111
4.74	MIU attendances (per 1,000), 2016/17	269	3
4.78a	All elective admissions (SAR), 2015/16 to 2016/17	14,257	94
4.80a	All emergency admissions (SAR), 2015/16 to 2016/17	10,612	117
6.02	Unpaid carers providing 20 hours or more care per week (%), 2011 (M)	3,853	39
6.04	Carers known to adult social care (per 1,000 population) 2016/17 (M)	1,593	21
6.07	Referrals to children's social care (per 1,000 aged under 18 yrs), 2016/17 (M)	1,135	57
6.17	65+ admitted to perm council supported resid or nursing care (per 100K), 2016/17 (M)	133	693

Significantly worse than ESBT	Significantly better than ESBT
Significantly higher than ESBT	Significantly lower than ESBT
Not significantly different to ESBT	Significance not tested

# Introduction

Hastings & St Leonards Locality is one of six localities in the East Sussex Better Together (ESBT) area. This narrative, based on 2018 JSNAA scorecard data, describes Hastings & St Leonards Locality in the ESBT context. A tabulated summary of 187 JSNAA indicators of health and wellbeing, showing localities and CCGs RAG-rated against ESBT, is included (Appendix 1). Individual JSNAA scorecards are referenced in the tables, and titles are flagged with (M) if indicator data has been modelled from LA to NHS geographies.

To best appreciate how localities and CCGs compare to ESBT it is important to read this commentary alongside the JSNAA indicator scorecards. The scorecards also compare GP practices to ESBT.

For indicators where locality or CCG data is not available, values for Hastings Borough (based on the LA view JSNAA scorecards) are discussed.

Here 'significance' refers to statistical significance at the 95% confidence level.

In Appendix 1 indicator values are given and statistically significant differences between locality and CCG values and ESBT are flagged in red/green or dark blue/light blue. But it is important to bear in mind that:

- where values are based on high counts, even small, possibly unimportant, differences may be statistically significant, and
- where values are based on low counts, even large, possibly important differences may not be statistically significant.

Some rates (for example, the GP-reported prevalence of diabetes) are not age-standardised. If crude rates are reported and the condition mainly affects older people it is important to also take into account the age profile of the population.

Standardised mortality ratios (SMRs) and hospital admission or attendance ratios (SARs) do take into account the age profile of the area. However, they can only be used to compare the locality (or CCG or GP practice) to ESBT, NOT to other localities (or CCGs or GP practices). So even where a locality has the highest SMR (or SAR) of all localities, it does not necessarily follow that the mortality (or hospital admission/attendance) rate is higher than in the other localities.

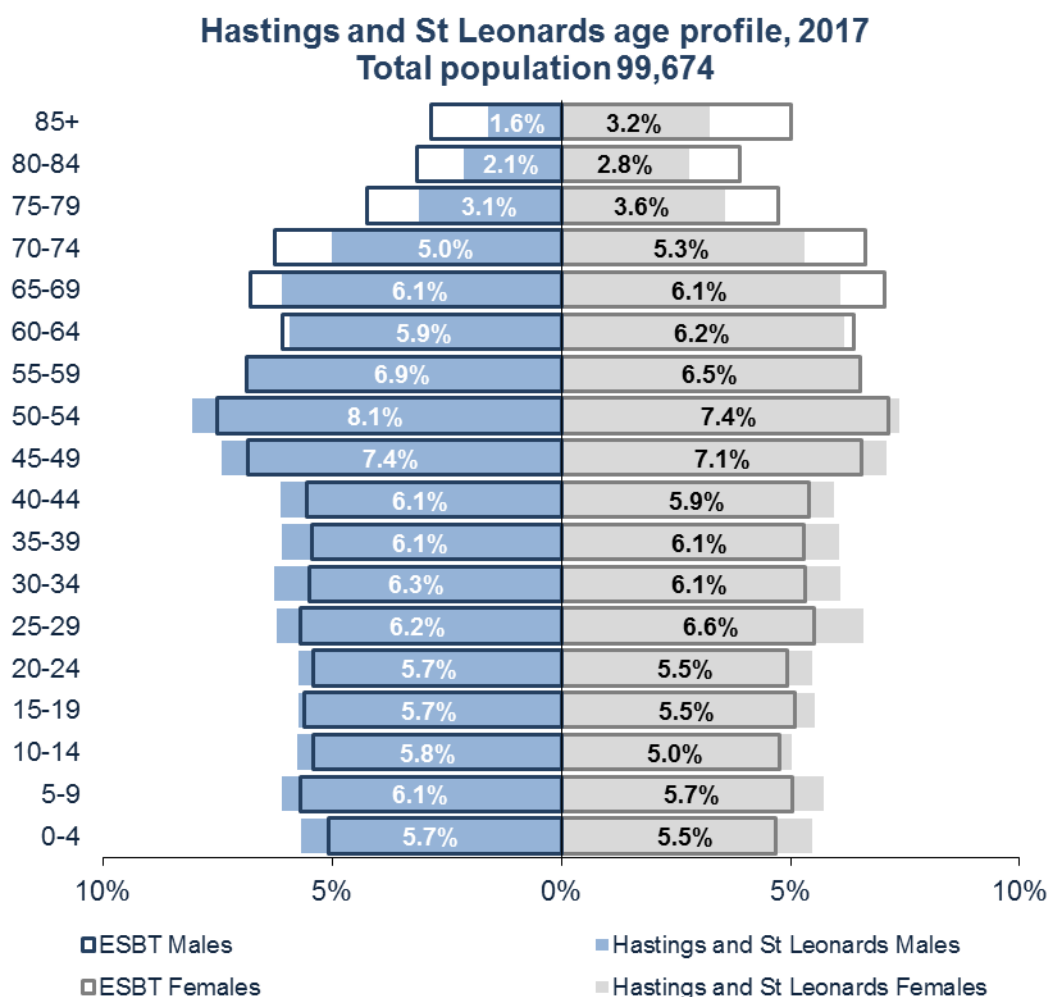
JSNAA scorecards and area summaries can be downloaded from

[www.eastsussexjsna.org.uk/](http://www.eastsussexjsna.org.uk/)

The following products can also be downloaded from the East Sussex JSNAA website:

- **GP Practice Profiles and Locality Profiles** - Spine charts are used to compare the GP practice or locality for all available JSNAA indicators.
- **Local Needs and Assets Profiles** - East Sussex, its districts/boroughs and CCGs are compared to England. RAG-rated tables similar to those in Appendix 1 (but with England as the benchmark) are included.

## Population



Hastings & St Leonards Locality has the second largest population of all ESBT localities. It has the highest percentage of 0-19 year olds and working age people and the lowest percentage of older people in ESBT. It has the lowest dependency ratio (of non-working age people compared to working age people) and percentage of older people living alone (both significantly lower than ESBT). It has the highest percentage of lone parent households (significantly higher than ESBT). This locality has the second highest levels of non-white British people and pupils with English as an additional language of all ESBT localities.

It has significantly higher rate of births to teenage mothers than ESBT and the highest of all ESBT localities. The overall birth rate is similar to ESBT.

Table 1 shows the estimated population changes between 2016 and 2022 for children and young people, working age adults and older adults. Using projections produced by East Sussex County Council, the table shows that over the next 6 years some age groups are projected to increase in size whilst others will decrease in size. The net effect is that the population of Hastings & St Leonards Locality is estimated to increase, with the largest estimated percentage increase in those aged 85 years and over.

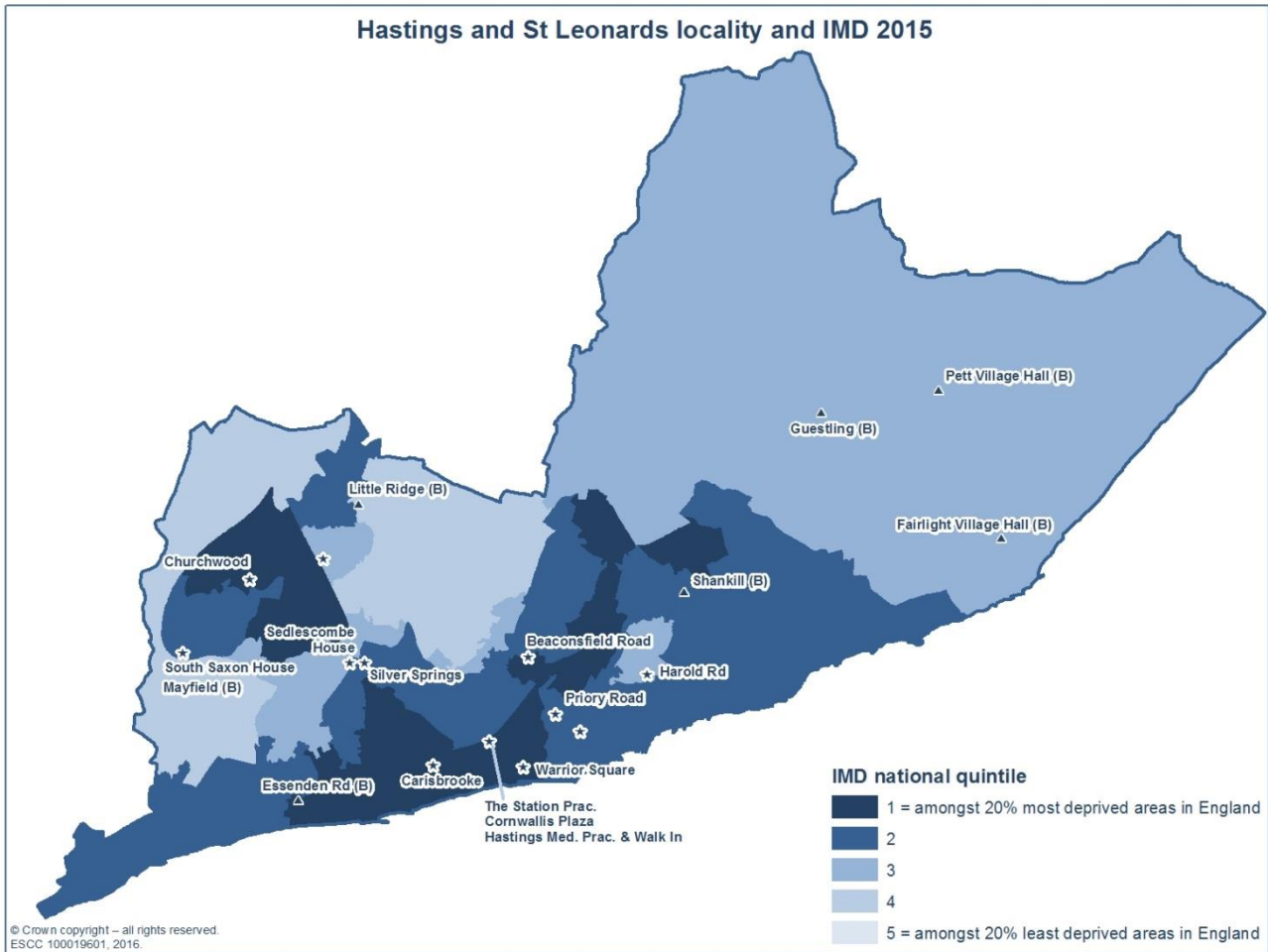
**Table 1: Population projections for all persons (number and percentage change) showing the increase (positive) or decrease (negative) from 2016 to 2022 (modelled)**

Population projections from 2016 to 2022						
Population Change	ESBT		H&R CCG		Hastings & St Leonards Locality	
	Number	%	Number	%	Number	%
0-19 years	1,050	1.3	0	0.0	0	0.0
20-64 years	-2,450	-1.2	-1,800	-1.7	-850	-1.4
65+ years	11,100	11.4	6,100	12.9	2,800	14.1
85+ years	3,100	20.1	1,400	20.0	500	20.4
All Ages	10,300	2.7	4,500	2.4	2,100	2.1

Note: Numbers may not add up due to rounding



## Wider determinants



Hastings & St Leonards Locality has the highest income and employment deprivation of all ESBT localities, including income deprivation affecting older people, children in low income families, children receiving the pupil premium, households with dependent children and no adults in employment (Census 2011), working age people claiming ESA, JSA and UC and households in fuel poverty, and in all cases significantly higher than ESBT.

It has the lowest levels of pupil attainment at age 5 (though not significantly different than ESBT) and age 16 of all ESBT localities. Note that it is not possible to determine whether statistically significant differences exist between different areas' GCSE attainment scores (pupils at age 16). It also has the highest rates of children with SEN on SEN support and young people who are NEET (both significantly higher than ESBT). It also has the highest percentage of working age people with no or low qualifications and significantly higher than ESBT (Census 2011).

Compared to ESBT a significantly higher percentage of households have no cars or vans (Census 2011), but a significantly higher percentage can access a GP within 15 minutes walking or using public transport; values are amongst the highest of all ESBT localities.

This locality has a significantly lower percentage than ESBT (the lowest of all localities) of owner-occupied households and a significantly higher percentage (the highest) of rented households (Census 2011). A significantly higher percentage of households are overcrowded and this locality also has the highest percentage of households with no central heating (Census 2011). A similar percentage of people live in care homes.

It has significantly higher rates of recorded crime, anti-social behaviour and emergency admissions for violence than ESBT, and the highest rates of all ESBT localities.

## Overall health status

Levels of self-reported ill health, life expectancy at birth and at age 75, all-age, premature and preventable mortality are all significantly worse than for ESBT. Hastings & St Leonards ranks worst of all ESBT localities for these life expectancy and mortality indicators.

## Healthy lifestyles

### Pregnancy and infancy

This locality has similar levels of low birth weight babies, breastfeeding initiation, and infant mortality to ESBT, but a significantly lower level of breastfeeding at age 6-8 weeks (the lowest of all ESBT localities).

### Physical activity and excess weight

It has significantly higher (the highest of all localities) levels of overweight or obese reception year children than ESBT. Hastings Borough has similar percentages of adults achieving 150 minutes physical activity per week, and overweight adults, to East Sussex.

### Smoking

It has significantly higher, and the highest, levels of adult smokers, mothers who are current smokers at the time of delivery and smoking quitters compared to ESBT. Hastings Borough

is the worst district/borough for smoking-attributable mortality and is significantly worse than East Sussex.

## **Alcohol and drug misuse**

It has the highest levels of adults (significantly higher than ESBT) and young people (not significantly higher than ESBT) in alcohol and/or drug treatment. Hastings Borough has the highest (significantly higher than East Sussex) alcohol-related hospital admissions and mortality (though not significantly different to East Sussex) of all district/boroughs.

## **Sexual health**

Hastings Borough has the highest under 18s conception rate and chlamydia detection rate for 15-24 year olds of all districts/boroughs (though not significantly higher than East Sussex). The chlamydia diagnosis rate for people aged 25+ is significantly higher than in East Sussex.

## **Accidents and injuries**

Hastings & St Leonards Locality has the highest/amongst the highest rates of all localities for MIU/A&E attendances and emergency admissions for accidents and injuries in 0-4 year olds, as well as for emergency admissions for accidents and injuries in 5-14 year olds and 15-24 year olds (though only significantly higher than ESBT for 15-24 year olds). For falls injuries in older people the emergency admissions rate is similar to ESBT. Hastings Borough has a significantly lower rate of people killed or seriously injured on the roads than East Sussex.

## **Health protection**

In Hastings & St Leonards a similar percentage of eligible people receive an NHS Health Check to ESBT. Uptake of screening for cervical cancer is also similar to ESBT. But uptake of cervical, breast and bowel cancer screening lower than in all other ESBT localities (and significantly lower than in ESBT). It is also significantly worse for child immunisation at ages 1 and 5 (the lowest uptake of all ESBT localities) and seasonal flu and PPV vaccinations for persons aged 65 years or over. Child immunisations levels at age 2 are similar to ESBT. A 95% target for vaccination coverage is required nationally to ensure control of vaccine preventable diseases (herd immunity) within the UK routine childhood vaccination programmes.

# Disease and poor health

## Mental health and wellbeing

Compared to ESBT Hastings & St Leonards has the highest (and significantly higher than ESBT): prevalence of severe mental illness and rates of emergency admissions for mental and behavioural disorders, persons with severe mental illness and self-harm, and working age people claiming ESA due to mental health problems. The prevalence of dementia (not age-standardised) is significantly lower than for ESBT, but emergency admissions for persons with dementia are significantly higher, and the highest of all localities. The suicide rate is amongst the highest, but not significantly different to ESBT.

## Circulatory

This locality has the lowest (significantly lower than ESBT) diagnosed prevalences (not age-standardised) of high blood pressure, CHD, stroke and atrial fibrillation of all ESBT localities. The reported versus expected prevalence of atrial fibrillation is significantly lower than in ESBT, suggesting poorer identification of patients with atrial fibrillation in Hastings & St Leonards than in ESBT. It has the highest (significantly higher than ESBT) emergency CHD admissions (and per 1,000 on GP CHD registers) and premature mortality from CHD.

## Cancer

Hastings & St Leonards Locality has the highest premature mortality due to cancer of all localities, though not significantly different to ESBT. Hastings Borough has the highest incidence of lung cancer (significantly higher than East Sussex) and mortality from lung cancer of all districts/boroughs. Mortality from prostate cancer is significantly lower than for East Sussex and the lowest of all the districts/boroughs.

## Respiratory

This locality has the lowest GP reported prevalence of asthma in ESBT, but emergency admissions due to asthma are significantly higher and the highest of all localities. Rates of emergency admissions for COPD and mortality from COPD are substantially and significantly higher than for ESBT and the highest of all localities, and this is also the case for premature mortality from respiratory conditions.

## Diabetes

This locality has a similar prevalence of diabetes (not age-standardised) to ESBT, but emergency admissions for diabetes are the highest of all localities (though not significantly different to ESBT).

## Other chronic conditions

It has a similar epilepsy prevalence (not age-standardised) and adult learning disability prevalence to ESBT, but the lowest CKD prevalence of all ESBT localities. It has substantially and significantly higher premature mortality from liver disease and the highest rate of all ESBT localities.

## Avoidable admissions

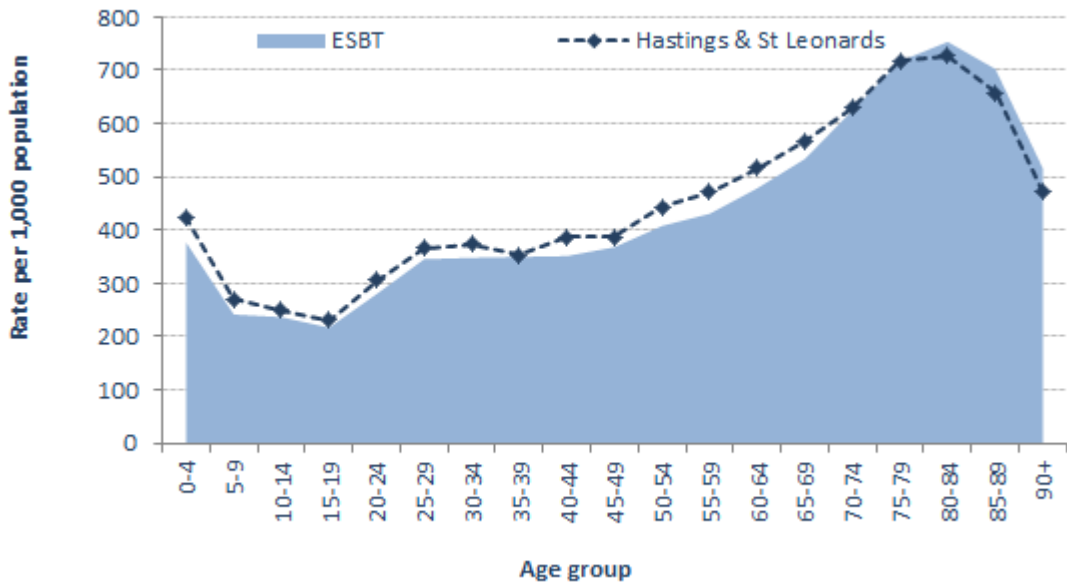
This locality has the highest emergency admissions in under 20s for diabetes, epilepsy or asthma (though not significantly different to ESBT) and the highest (significantly higher than ESBT) emergency admissions rates for chronic and other/vaccine preventable ACS conditions.

## Hospital admissions and attendances

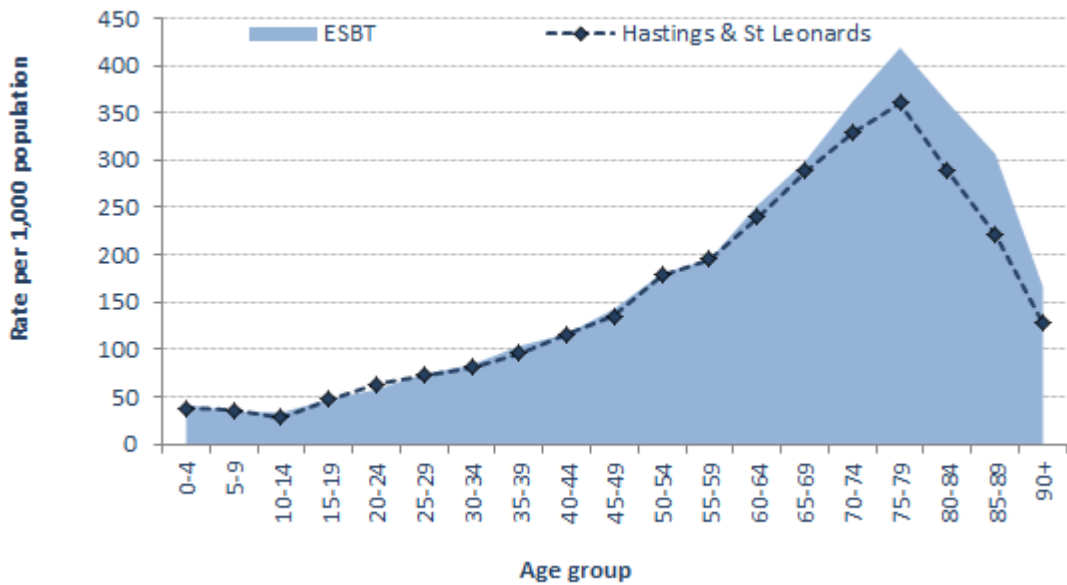
This locality has the highest rates of outpatient attendances and outpatient DNAs of all ESBT localities. It has amongst the lowest rates of MIU attendances. A&E attendances for 0-4 year olds and 15-29 year olds, and overall, are significantly higher than for ESBT and the highest of all localities, but A&E attendances in people aged 70 and over are similar to ESBT. Elective admissions are significantly lower than in ESBT, and the rate for over 65s is the lowest of all ESBT localities. This locality has a significantly higher (the highest of all ESBT localities) emergency admissions rate overall, as well as for people aged 70-84.

The following graphs present the age-specific overall attendance and admission rates for the locality compared to ESBT.

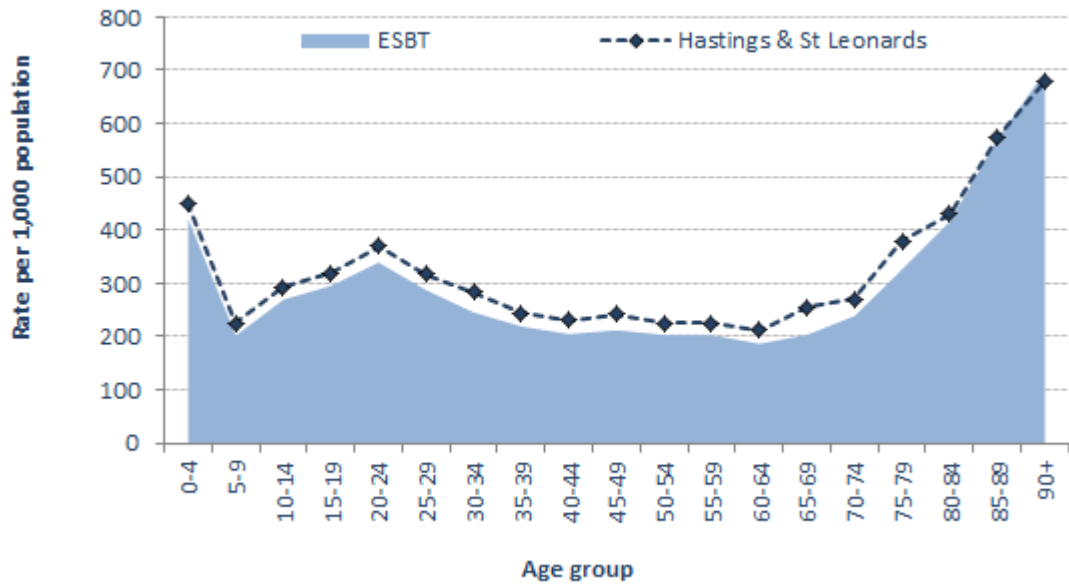
### Age-specific outpatients attendance rates



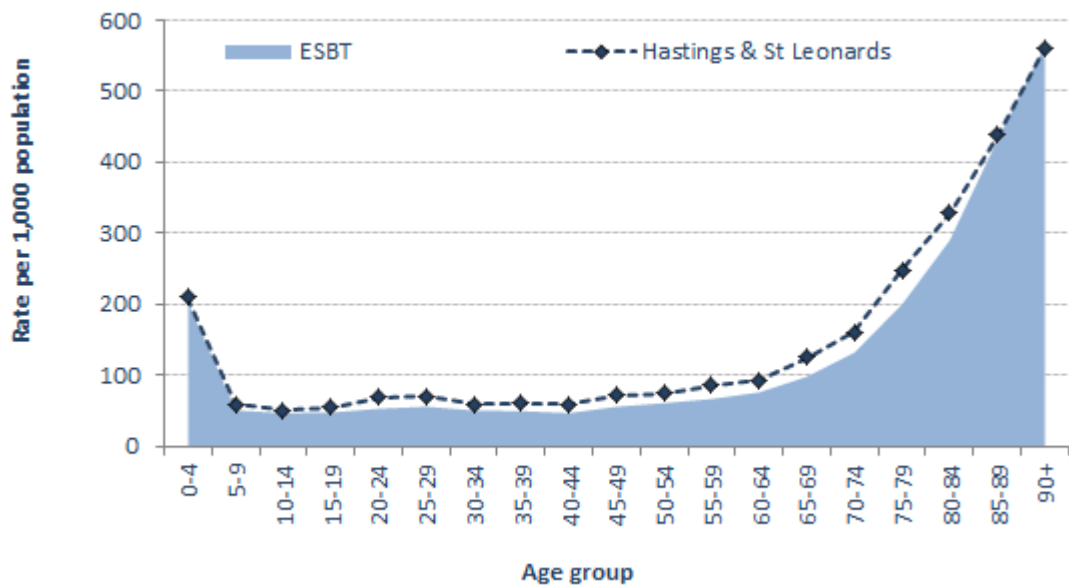
### Age-specific elective admission rates



### Age-specific A&E attendance rates



### Age-specific emergency admission rates



## Social care

### Children's services

Hastings & St Leonards has the highest rates of referrals to children's social care, children on a child protection plan (both significantly higher than ESBT) and looked after children (though not significantly higher than ESBT).

### Carers

Compared to ESBT this locality has a slightly lower proportion of people providing one hour or more of unpaid care per week but a significantly higher proportion, and the highest of all ESBT localities, of unpaid carers providing 20 hours or more care per week. It has similar rates of working age people claiming Carers Allowance, carers known to adult social care and carers receiving a service.

### Adult social care

Compared to ESBT this locality has similar rates of adults receiving direct payments and self-directed support. It has significantly higher rates (the highest of all ESBT localities) of both working-age and older adults receiving Long Term Support.

## NHS dental services

Compared to ESBT a similar percentage of children and young people, but a significantly higher percentage of adults, access East Sussex NHS general dental services.

## GP patient survey

The percentage of patients responding to the GP Patient Survey is significantly lower than for ESBT and the lowest of all ESBT localities. The percentage of respondents reporting a good overall experience of their surgery, including booking appointments and satisfaction with opening hours, and reporting that GPs involve them in decisions on care, are significantly worse than for ESBT. The percentage of patients reporting the nurse was good at involving them in decisions is similar to ESBT.



## Appendix 1: Scorecard summary tables

Significantly worse than ESBT	Significantly better than ESBT	Significantly higher than ESBT	Significantly lower than ESBT	Not significantly different to ESBT	Significance not tested
-------------------------------	--------------------------------	--------------------------------	-------------------------------	-------------------------------------	-------------------------

Population										
Significance compared to ESBT										
Ref	Indicator	ESBT	EHS CCG	HR CCG	Eastbn.	Hailsham & Polegate	Seaford	Bexhill	Hastings & St Leonards	Rural Rother
1.01	GP registered population (count), April 2017	382,611	194,800	187,811	118,076	48,931	27,793	47,460	99,674	40,677
1.02	GP registered population aged 0-19 yrs (%), April 2017	21	21	21	21	21	17	17	23	20
1.03	GP registered population aged 20-64 yrs (%), April 2017	54	54	54	55	51	50	49	58	52
1.04	GP registered population aged 65+ yrs (%), April 2017	25	26	25	24	27	33	34	19	28
1.05	GP registered population aged 85+ yrs (%), April 2017	4.0	4.3	3.6	3.9	4.5	5.6	6.0	2.4	3.6
1.11	Dependency ratio, April 2017	0.71	0.73	0.70	0.67	0.79	0.88	0.90	0.60	0.77
1.12	Lone older person (aged 65+) households (%), 2011 (M)	17	18	16	17	17	20	22	13	17
1.13	Lone parent households (%), 2011 (M)	6	6	7	7	6	5	5	8	5
1.14	Non-White British population (%), 2011 (M)	9	9	8	12	6	6	6	10	5
1.15	Non-White British pupils (%), 2017 (M)	15	16	14	20	11	11	11	16	9
1.16	Pupils with English as an additional language (per 1,000), 2017 (M)	69	80	57	110	35	35	47	72	23
1.18	Live births per 1,000 women aged 15-44 yrs, 2014-16	62	61	62	60	69	54	58	65	58
1.19	Live births per 1,000 women aged 15-19 yrs, 2014-16	16	15	18	17	13	7	15	22	8
1.20	Live births per 1,000 women aged 35-44 yrs, 2014-16	34	34	35	34	33	35	30	35	40

### Wider determinants - Economy, income and transport

Significance compared to ESBT

Ref	Indicator	Significance compared to ESBT								
		ESBT	EHS CCG	HR CCG	Eastbn.	Hailsham & Polegate	Seaford	Bexhill	Hastings & St Leonards	Rural Rother
2.02	Income Deprivation (as a percentage), from ID 2015 (M)	15	13	18	14	12	10	15	22	11
2.04	Children in low-income families (%), Aug 2014 (M)	22	19	25	20	19	14	23	28	16
2.05	Income Deprivation Affecting Older People Index (IDAOPI) (as a percentage), from ID 2015 (M)	17	15	18	16	13	10	15	23	12
2.06	Households in fuel poverty (%), 2015 (M)	10	9	10	9	9	8	9	11	10
2.07	Pupils receiving the pupil premium (%), Jan 2017 (M)	23	20	26	21	18	16	23	30	19
2.08	Households with dependent children and no adults in employment (%), 2011 (M)	15	12	17	13	11	10	16	20	10
2.09	Employment Deprivation (as a percentage), from ID 2015 (M)	13	12	15	13	10	9	14	18	9
2.10	Working age people claiming JSA and Universal Credit (%), Aug 2017 (M)	2.0	1.4	2.6	1.6	1.0	1.0	1.6	3.6	1.3
2.11	Working age people claiming ESA (%), Feb 2017 (M)	7	6	8	7	6	5	8	10	5
2.12	Households with no cars or vans (%), 2011 (M)	25	24	26	27	18	20	24	32	14
2.13	Households able to access a GP practice in 15 min by public transport/walking (%), 2014 (M)	84	81	86	84	84	66	91	90	69

### Wider determinants - Education

Significance compared to ESBT

Ref	Indicator	Significance compared to ESBT								
		ESBT	EHS CCG	HR CCG	Eastbn.	Hailsham & Polegate	Seaford	Bexhill	Hastings & St Leonards	Rural Rother
2.15	Pupils (at age 5) reaching a good level of development in the EYFS (%), Jun 2017 (M)	76	77	76	77	77	77	80	73	78
2.16	Pupils (at age 11) achieving the expected standard at Key Stage 2, Jun 2017 (M)	55	51	58	50	52	57	61	54	66
2.17	Average GCSE Attainment 8 score for pupils (at age 16) at Key Stage 4, Jun 2017 (M)	44	45	43	44	46	46	43	42	46
2.18	Working age population with no or low qualifications (%), 2011 (M)	32	30	34	30	32	29	33	36	30
2.19	Pupils with special educational needs (SEN) on SEN Support (per 1,000), Jan 2017 (M)	93	86	99	85	91	79	97	105	84
2.20	Pupils with a statement of SEN or an EHCP (per 1,000), Jan 2017 (M)	36	34	38	33	34	39	38	38	35
2.21	Young people aged 16-18 yrs NEET (monthly rate per 1,000), Nov 2016 to Jan 2017 (M)	56	49	63	58	36	34	40	81	42

### Wider determinants - Housing

Significance compared to ESBT

Ref	Indicator	ESBT	EHS CCG	HR CCG	Eastbn.	Hailsham & Polegate	Seaford	Bexhill	Hastings & St Leonards	Rural Rother
2.25	Households that are overcrowded (%), 2011 (M)	7	8	7	9	5	5	6	9	4
2.26	Households with no central heating (%), 2011 (M)	3.1	2.5	3.7	2.8	2.1	1.8	2.4	4.5	3.4
2.27	Households owned outright or with a mortgage/loan (%), 2011 (M)	67	69	64	64	77	78	72	57	74
2.28	Socially rented households (%), 2011 (M)	12	11	12	12	10	7	9	14	12
2.29	Privately rented households (%), 2011 (M)	20	18	22	22	11	13	17	28	12
2.30	Persons living in care homes with nursing (%), 2011 (M)	0.5	0.5	0.6	0.4	0.5	0.6	1.1	0.4	0.3
2.31	Persons living in care homes without nursing (%), 2011 (M)	0.9	0.9	1.0	0.9	0.8	1.0	1.3	1.0	0.8

### Wider determinants - Crime

Significance compared to ESBT

Ref	Indicator	ESBT	EHS CCG	HR CCG	Eastbn.	Hailsham & Polegate	Seaford	Bexhill	Hastings & St Leonards	Rural Rother
2.33	Recorded crimes (per 1,000 population), 2016/17 (M)	64	57	70	68	44	37	52	91	39
2.34	Recorded incidents of Anti-Social Behaviour (per 1,000 population), 2016/17 (M)	27	25	29	30	17	18	24	38	15
2.35	A&E attendances by 15-59 yr olds for assaults, 8pm-4am (per 1,000), 2014/15 to 2016/17	1.6	1.7	1.5	2.0	1.3	1.1	1.3	1.7	1.0
2.36a	Emergency admissions for violence (SAR), 2014/15 to 2016/17	100	76	124	86	56	65	80	161	68

### Overall health status

Significance compared to ESBT

Ref	Indicator	ESBT	EHS CCG	HR CCG	Eastbn.	Hailsham & Polegate	Seaford	Bexhill	Hastings & St Leonards	Rural Rother
4.01	People reporting that their health is bad or very bad (%), 2011 (M)	6	6	7	6	6	6	8	7	5
4.02	People reporting a limiting long-term health problem or disability (%), 2011 (M)	22	21	23	21	21	23	27	22	20
4.04	Life expectancy at birth (yrs), 2014-16	81.7	82.3	81.1	82.3	81.8	83.4	81.4	79.7	83.5
4.05	Life expectancy at age 75 (yrs), 2014-16	12.7	12.9	12.4	13.0	12.7	13.3	12.7	11.7	13.5
4.06a	All-cause mortality (SMR), 2014-16	100	96	105	96	100	90	101	119	85
4.07a	Premature all-cause mortality (SMR), 2014-16	100	95	105	97	102	76	98	125	74
4.08a	Mortality from causes considered preventable (SMR), 2014-16	100	94	106	93	108	73	98	127	75

### Healthy Lifestyles - Pregnancy and infancy

Significance compared to ESBT

Ref	Indicator	ESBT	EHS CCG	HR CCG	Eastbn.	Hailsham & Polegate	Seaford	Bexhill	Hastings & St Leonards	Rural Rother
3.01	Low birth weight (%), 2014-16	6	6	7	7	4	5	7	7	5
3.02	Breastfeeding initiation (%), 2016/17	80	83	78	84	80	85	74	78	81
3.03	Breastfeeding prevalence at 6-8 weeks after birth (%), 2016/17 (M)	49	53	45	52	53	61	44	43	53
4.09	Infant mortality (per 1,000 live births), 2014-16	3.6	3.6	3.5	4.9				4.2	

### Healthy Lifestyles - Physical activity and excess weight

Significance compared to ESBT

Ref	Indicator	ESBT	EHS CCG	HR CCG	Eastbn.	Hailsham & Polegate	Seaford	Bexhill	Hastings & St Leonards	Rural Rother
3.04	Adults achieving 150+ minutes physical activity per week (%), 2015/16									
3.05	Excess weight in 4-5 year olds (%), 2013/14 to 2015/16 (M)	22	21	23	22	21	17	23	24	21
3.06	Excess weight in 10-11 year olds (%), 2013/14 to 2015/16 (M)	32	32	32	34	31	28	33	33	29
3.07	Excess weight in adults (%), 2013-2015									

### Healthy Lifestyles - Smoking

Significance compared to ESBT

Ref	Indicator	ESBT	EHS CCG	HR CCG	Eastbn.	Hailsham & Polegate	Seaford	Bexhill	Hastings & St Leonards	Rural Rother
3.09	GP reported prevalence of smoking aged 15+ (%), 2016/17	18	16	20	17	14	13	17	24	15
3.10	Smoking quitters at 4 weeks (per 100,000 aged 16+yrs), 2016/17 (M)	323	287	361	321	173	336	390	403	222
3.11	Mothers known to be smokers at the time of delivery (%), 2016/17	14	12	16	13	14	6	14	18	11
3.12	Smoking-attributable deaths in persons aged 35+ yrs (DSR per 100,000), 2012-2014									

### Healthy Lifestyles - Alcohol and drug misuse

Significance compared to ESBT

Ref	Indicator	ESBT	EHS CCG	HR CCG	Eastbn.	Hailsham & Polegate	Seaford	Bexhill	Hastings & St Leonards	Rural Rother
3.13	Young people in drug or alcohol treatment (per 10,000 aged 0-18 yrs), Sep 16 to Aug 17 (M)	21	18	23	19	16	21	20	27	16
3.14	Adults aged 19+ in alcohol treatment (per 10,000), 2016/17 (M)	19	18	20	20	12	15	14	28	10
3.15	Alcohol-related admissions (DSR per 100,000), 2015/16		634	665						
3.16	Alcohol-related mortality (DSR per 100,000), 2015									
3.17	Adults aged 19+ in drug treatment (per 10,000), 2016/17 (M)	45	42	49	55	23	24	24	75	16

### Healthy Lifestyles - Sexual health

Significance compared to ESBT

Ref	Indicator	ESBT	EHS CCG	HR CCG	Eastbn.	Hailsham & Polegate	Seaford	Bexhill	Hastings & St Leonards	Rural Rother
3.30	Under 18s conceptions (per 1,000 females aged 15-17), 2015									
3.31	Chlamydia detection rate in persons aged 15-24 (per 100,000), 2016	1,622	1,580	1,664						
3.32	Chlamydia diagnostic rate in persons aged 25+ (per 100,000), 2016	117	121	113						
3.33	Gonorrhoea diagnostic rate (per 100,000), 2016	26	27	24						

### Healthy Lifestyles - Accidents and injuries

Significance compared to ESBT

Ref	Indicator	ESBT	EHS CCG	HR CCG	Eastbn.	Hailsham & Polegate	Seaford	Bexhill	Hastings & St Leonards	Rural Rother
3.34	MIU and A&E attendances for accidents & injuries in 0-4 yr olds (per 10,000), 2016/17	1,616	1,605	1,628	1,656	1,596	1,348	1,704	1,688	1,326
3.35	Emergency admissions for accidents & injuries in 0-4 yr olds (per 10,000), 2014/15 to 2016/17	178	156	201	159	145	158	201	204	191
3.36	Emergency admissions for accidents & injuries in 5-14 yr olds (per 10,000), 2014/15 to 2016/17	91	81	100	84	81	68	99	102	94
3.37	Emergency admissions for accidents and injuries in 15-24 yr olds (per 10,000), 2014/15 to 2016/17	122	101	145	92	105	141	123	157	135
3.38a	Emergency admissions for falls injuries for people aged 65+ (SAR), 2015/16 to 2016/17	100	103	97	104	105	96	96	104	86
3.39	People killed or seriously injured on East Sussex roads (per 100,000), 2013 to 2015									

### Health protection - Health checks and screening

Significance compared to ESBT

Ref	Indicator	ESBT	EHS CCG	HR CCG	Eastbn.	Hailsham & Polegate	Seaford	Bexhill	Hastings & St Leonards	Rural Rother
3.18	Eligible people aged 40-74 who received an NHS Health Check (%), Apr 2013 to Mar 2017	45	45	46	47	37	49	55	46	34
3.19	Eligible women aged 25-64 screened for cervical cancer (%), at Mar 2016	75	75	74	74	78	77	75	73	78
3.20	Eligible women aged 50-70 screened for breast cancer (%), at Mar 2016	72	73	72	70	76	77	76	68	75
3.21	Eligible people aged 60-69 screened for bowel cancer (%), at Mar 2016	60	60	60	58	62	65	64	55	63

### Health protection - Immunisation

Significance compared to ESBT

Ref	Indicator	ESBT	EHS CCG	HR CCG	Eastbn.	Hailsham & Polegate	Seaford	Bexhill	Hastings & St Leonards	Rural Rother
3.22	Children immunised for DTaP/IPV/Hib by age 1 (%), 2016/17	94	96	92	96	94	95	93	91	96
3.23	Children immunised for pneumococcal infection by age 2 (%), 2016/17	95	96	94	96	94	97	93	95	93
3.24	Children immunised for Hib/MenC by age 2 (%), 2016/17	94	95	93	95	93	97	93	93	94
3.25	Children immunised for measles, mumps and rubella (MMR) by age 2 (%), 2016/17	93	94	92	94	90	96	91	92	91
3.26	Children immunised for DTaP/IPV by age 5 (%), 2016/17	91	92	90	92	93	94	93	88	93
3.27	Children immunised for measles, mumps and rubella (MMR) by age 5 (%), 2016/17	91	92	90	92	93	92	92	88	92
3.28	People aged 65+ receiving seasonal flu vaccination (%), Sep 2016 to Jan 2017	71	71	71	72	68	75	75	68	69
3.29	People aged 65+ ever receiving a pneumococcal vaccination (%), at 31 Mar 2017	70	68	71	68	65	69	76	68	69

### Disease and poor health - Mental health

Significance compared to ESBT

Ref	Indicator	ESBT	EHS CCG	HR CCG	Eastbn.	Hailsham & Polegate	Seaford	Bexhill	Hastings & St Leonards	Rural Rother
4.10	GP reported incidence of depression in persons aged 18+ (%), 2016/17	12.4	13.1	11.6	13.1	14.1	11.5	11.8	12.7	8.8
4.11	GP reported prevalence of severe mental illness (%), 2016/17	1.2	1.1	1.3	1.2	0.9	1.1	1.3	1.5	0.7
4.12a	Emergency admissions for mental and behavioural disorders (SAR), 2015/16 to 2016/17	100	89	111	101	69	76	91	140	71
4.13a	Emergency admissions, people with severe mental illness (SAR), 2015/16 to 2016/17	100	88	113	85	97	83	98	145	57
4.14a	Emergency admissions relating to self-harm (SAR), 2015/16 to 2016/17	100	90	110	86	88	116	99	131	66
4.15	GP reported prevalence of dementia (%), 2016/17	1.2	1.3	1.1	1.2	1.2	1.5	1.7	0.9	0.9
4.16	GP reported versus expected prevalence of dementia at age 65+ (ratio), 31 Jan 17	63	64	61						
4.17a	Elective admissions, people 30+ with dementia (SAR), 2015/16 to 2016/17	100	112	86	105	145	89	87	99	61
4.18a	Emergency admissions, people 30+ with dementia (SAR), 2015/16 & 2016/17	100	103	96	102	110	97	94	116	67
4.19	CAMHS caseload (per 1,000 aged 0-18 yrs), Mar 2017	23	25	22	24	26	26	23	23	18
4.20	Working age people claiming ESA for mental health problems (per 1,000), Feb 2017 (M)	35	31	40	34	24	25	38	48	20
4.21a	Mortality from suicide (SMR), 2013-16	100	99	102	90	127	85	88	125	60

### Disease and poor health - Circulatory

Significance compared to ESBT

Ref	Indicator	ESBT	EHS CCG	HR CCG	Eastbn.	Hailsham & Polegate	Seaford	Bexhill	Hastings & St Leonards	Rural Rother
4.22	GP reported prevalence of hypertension (%), 2016/17	17.6	17.5	17.7	16.1	18.8	21.3	22.4	15.1	18.7
4.23	GP reported versus expected prevalence of hypertension (ratio), 2014/15	61	62	61	60	63	64	65	59	61
4.24	GP reported prevalence of high blood pressure without established CVD (%), 2016/17	1.4	1.3	1.5	1.2	1.5	1.5	1.8	1.3	1.7
4.25	GP reported prevalence of CHD (%), 2016/17	4.0	4.0	4.0	3.7	4.4	4.9	5.5	3.4	3.8
4.26a	Emergency admissions for CHD (SAR), 2015/16 to 2016/17	100	88	113	89	88	85	106	127	94
4.27	Emergency admissions for CHD per 1,000 on GP CHD registers, 2016/17	58	50	66	55	46	41	58	75	62
4.28	GP reported prevalence of stroke or TIA (%), 2016/17	2.5	2.5	2.4	2.3	2.6	3.2	3.3	2.1	2.3
4.29a	Emergency admissions for stroke (SAR), 2015/16 to 2016/17	100	102	98	95	111	111	91	108	89
4.30a	Mortality from stroke (SMR), 2013-16	100	100	100	91	115	106	97	109	91
4.31	GP reported prevalence of atrial fibrillation (%), 2016/17	3.0	3.2	2.8	3.0	3.4	4.1	4.0	2.1	3.2
4.32	GP reported versus expected prevalence of atrial fibrillation (ratio), 2014/15	74	78	70	77	78	80	74	64	72
4.33	GP reported prevalence of heart failure (%), 2016/17	1.1	1.1	1.1	1.0	1.3	1.3	1.5	0.9	0.9
4.34	GP reported prevalence of PAD (%), 2016/17	0.8	0.8	0.8	0.7	0.8	1.1	1.0	0.7	0.7
4.35a	Premature mortality from circulatory diseases (SMR), 2013-16	100	91	109	88	99	88	90	136	77



### Disease and poor health - Cancer

Significance compared to ESBT

Ref	Indicator	ESBT	EHS CCG	HR CCG	Eastbn.	Hailsham & Polegate	Seaford	Bexhill	Hastings & St Leonards	Rural Rother
4.36	Incidence of lung cancer (DSR per 100,000), 2013-2015	69	67	71						
4.37	Mortality from lung cancer (DSR per 100,000), 2013-15	51	48	54						
4.38	Incidence of colorectal cancer (DSR per 100,000), 2013-2015	70	69	72						
4.39	Mortality from colorectal cancer (DSR per 100,000), 2013-15	28	25	31						
4.40	Incidence of breast cancer (DSR per 100,000 women), 2013-2015	170	163	176						
4.41	Mortality from breast cancer (DSR per 100,000 women), 2013-15	40	40	40						
4.42	Incidence of prostate cancer (DSR per 100,000 men), 2013-2015	184	181	187						
4.43	Mortality from prostate cancer (DSR per 100,000 men), 2013-15	46	47	45						
4.44	Incidence of all cancers (DSR per 100,000), 2013-2015	595	591	601						
4.46	Mortality from all cancers (DSR per 100,000), 2013-15	274	268	280						
4.47a	Premature mortality from cancer (SMR), 2013-16	100	98	102	103	98	80	103	110	87

### Disease and poor health - Respiratory

Significance compared to ESBT

Ref	Indicator	ESBT	EHS CCG	HR CCG	Eastbn.	Hailsham & Polegate	Seaford	Bexhill	Hastings & St Leonards	Rural Rother
4.48	GP reported prevalence of asthma (%), 2016/17	6.3	6.6	6.0	6.4	7.0	7.0	6.7	5.6	6.1
4.49a	Emergency admissions for asthma (SAR), 2015/16 to 2016/17	100	91	109	100	79	72	114	122	70
4.50	Emergency admissions for asthma per 1,000 on GP asthma registers, 2016/17	15	13	17	15	12	10	17	19	13
4.51	GP reported prevalence of COPD (%), 2016/17	2.4	2.3	2.5	2.1	2.5	2.4	2.8	2.6	1.9
4.52a	Emergency admissions for COPD (SAR), 2015/16 to 2016/17	100	88	113	84	100	82	104	152	53
4.53	Emergency admissions for COPD per 1,000 on GP COPD registers, 2016/17	88	85	91	82	85	96	98	98	60
4.54a	Mortality from COPD (SMR), 2013-16	100	87	115	89	91	74	100	141	92
4.55a	Premature mortality from respiratory diseases (SMR), 2013-16	100	86	114	92	88	65	102	146	67

### Disease and poor health - Diabetes

Significance compared to ESBT

Ref	Indicator	ESBT	EHS CCG	HR CCG	Eastbn.	Hailsham & Polegate	Seaford	Bexhill	Hastings & St Leonards	Rural Rother
4.56	GP reported prevalence of diabetes aged 17+ (%), 2016/17	6.9	6.7	7.1	6.4	7.1	7.0	8.2	6.8	6.7
4.57a	Emergency admissions for diabetes (SAR), 2015/16 to 2016/17	100	106	94	109	98	108	82	117	56
4.58	Emergency admissions for diabetes per 1,000 on GP diabetes registers, 2016/17	16	17	15	18	15	16	13	18	10

### Disease and poor health - Other conditions

Significance compared to ESBT

Ref	Indicator	ESBT	EHS CCG	HR CCG	Eastbn.	Hailsham & Polegate	Seaford	Bexhill	Hastings & St Leonards	Rural Rother
4.59	GP reported prevalence of epilepsy aged 18+ (%), 2016/17	0.9	0.8	0.9	0.8	0.8	0.7	1.0	1.0	0.6
4.60a	Premature mortality from liver disease (SMR), 2013-16	100	82	118	81	79	91	98	154	61
4.61	GP reported prevalence of CKD aged 18+ (%), 2016/17	5.3	6.2	4.3	5.6	7.1	7.2	5.3	3.8	4.4
4.64	GP reported prevalence of learning disabilities aged 18+ (%), 2016/17	0.7	0.6	0.8	0.6	0.5	0.4	0.7	0.8	0.6
4.65	GP reported prevalence of palliative care needs (%), 2016/17	0.5	0.6	0.4	0.6	0.5	0.6	0.5	0.4	0.4
2.24	Mortality attributable to manmade particulate air pollution (%) in adults aged 30+, 2015									

### Disease and poor health - Avoidable admissions

Significance compared to ESBT

Ref	Indicator	ESBT	EHS CCG	HR CCG	Eastbn.	Hailsham & Polegate	Seaford	Bexhill	Hastings & St Leonards	Rural Rother
4.66a	Emergency admissions for LRTIs in under 20s (SAR), 2015/16 to 2016/17	100	106	94	106	103	109	87	103	71
4.67a	Emergency admissions for diabetes, epilepsy, asthma in under 20s (SAR), 2015/16 to 2016/17	100	92	109	108	60	72	117	120	67
4.68a	Emergency admissions for chronic ACS conditions (SAR), 2015/16 to 2016/17	100	90	111	91	89	87	103	134	74
4.69a	Emergency admissions for acute ACS conditions (SAR), 2015/16 to 2016/17	100	103	96	111	100	82	91	106	80
4.70a	Emergency admissions for other & vaccine preventable ACS conditions (SAR), 2015/16 to 2016/17	100	100	99	101	103	95	85	122	76

### Disease and poor health - Hospital attendances and admissions

Significance compared to ESBT

Ref	Indicator	ESBT	EHS CCG	HR CCG	Eastbn.	Hailsham & Polegate	Seaford	Bexhill	Hastings & St Leonards	Rural Rother
4.71a	First outpatient attendances (SAR), 2016/17	100	97	103	96	97	104	104	106	94
4.72	Outpatient appointments where the patient did not attend (%), 2016/17	8.0	7.4	8.6	7.8	7.2	6.2	7.2	9.9	7.0
4.73a	A&E (type 1) attendances (SAR), 2016/17	100	100	100	103	98	89	96	111	79
4.74	MIU attendances (per 1,000), 2016/17	7	10	3	4	14	31	3	3	6
4.75	A&E (type 1) attendances for 0-4 yr olds (per 1,000), 2016/17	421	419	424	430	389	428	420	451	333
4.76	A&E (type 1) attendances for persons aged 15-29 (per 1,000), 2016/17	307	306	308	310	299	296	296	335	240
4.77	A&E (type 1) attendances for persons aged 70+ (per 1,000), 2016/17	379	398	358	406	412	357	367	392	287
4.78a	All elective admissions (SAR), 2015/16 to 2016/17	100	105	94	105	109	100	99	94	90
4.79	Elective admissions for persons aged 65+ (per 1,000), 2015/16 to 2016/17	336	361	310	364	359	354	323	298	313
4.80a	All emergency admissions (SAR), 2015/16 to 2016/17	100	95	106	97	95	86	101	117	86
4.81	Emergency admissions for persons aged 70-84 yrs (per 1,000), 2015/16 to 2016/17	194	191	197	196	193	175	191	228	155
4.82	Emergency admissions for persons aged 85+ (per 1,000), 2015/16 to 2016/17	483	490	475	486	521	458	480	484	448

### Children's services

Significance compared to ESBT

Ref	Indicator	ESBT	EHS CCG	HR CCG	Eastbn.	Hailsham & Polegate	Seaford	Bexhill	Hastings & St Leonards	Rural Rother
6.07	Referrals to children's social care (per 1,000 aged under 18 yrs), 2016/17 (M)	41	35	47	37	32	29	41	57	25
6.08	Children on a child protection plan (per 1,000 aged under 18 yrs), 31 March 2017 (M)	6	3	8	3	5	2	6	12	1
6.09	Looked after children (per 1,000 aged under 18 yrs), 31 March 2017 (M)	6.1	5.3	6.9	4.9	5.7	6.1	6.8	7.8	4.8

### Carers

Significance compared to ESBT

Ref	Indicator	ESBT	EHS CCG	HR CCG	Eastbn.	Hailsham & Polegate	Seaford	Bexhill	Hastings & St Leonards	Rural Rother
6.01	People providing one hour or more of unpaid care per week (%), 2011 (M)	11.4	11.3	11.5	10.9	11.6	12.5	12.7	10.7	12.0
6.02	Unpaid carers providing 20 hours or more care per week (%), 2011 (M)	36	35	37	36	35	29	38	39	32
6.03	Working age people claiming Carers Allowance (%), Feb 2017 (M)	1.8	1.7	2.0	1.7	1.7	1.3	2.0	2.1	1.7
6.04	Carers known to adult social care (per 1,000 population) 2016/17 (M)	20	18	21	18	20	17	24	21	18
6.05	Carers (known to adult social care) receiving a service (%), 2016/17 (M)	93	91	94	90	91	91	95	95	93
6.06	Carers receiving self-directed support (per 1,000 aged 18+), 2016/17 (M)	8	7	9	6	7	6	10	9	7

### Adult social care

Significance compared to ESBT

Ref	Indicator	ESBT	EHS CCG	HR CCG	Eastbn.	Hailsham & Polegate	Seaford	Bexhill	Hastings & St Leonards	Rural Rother
6.10	Adults receiving direct payments (per 1,000), at 31st July 2017 (M)	4	3	5	3	4	2	4	5	4
6.11	Adults receiving self-directed support (per 1,000), 31st July 2017 (M)	12	12	13	12	13	10	14	14	9
6.12	Working age people receiving Long Term Support (per 1,000), 2016/17 (M)	9	8	11	8	8	6	12	12	6
6.13	People aged 65+ receiving Long Term Support (per 1,000), 2016/17 (M)	30	30	30	30	34	24	27	35	25
6.14	Learning disabled aged 18-64 in settled accommodation (%), Aug 2016 to July 2017 (M)	74	78	71	74	84	82	80	74	46
6.15	Adults receiving community equipment (per 1,000), 2016/17 (M)	15	16	15	15	17	15	17	14	13
6.16	Adults receiving adult social care funded lifeline or telecare (per 1,000), 2016/17 (M)	20	21	19	20	23	21	23	17	16
6.17	65+ admitted to perm council supported resid or nursing care (per 100K), 2016/17 (M)	539	546	531	503	743	405	583	693	160
6.18	New ASC clients receiving services, not asking for more ongoing (%), 2016/17 (M)	100	100	99	100	100	100	99	99	99

### NHS dental services

Significance compared to ESBT

Ref	Indicator	ESBT	EHS CCG	HR CCG	Eastbn.	Hailsham & Polegate	Seaford	Bexhill	Hastings & St Leonards	Rural Rother
3.40	Residents aged 0-17 accessing East Sussex NHS general dental services (%), 2016/17 (M)	75	76	74	74	80	80	71	75	74
3.41	Residents aged 18-64 accessing East Sussex NHS general dental services (%), 2016/17 (M)	51	48	54	47	54	47	53	57	48
3.42	Residents aged 65+ accessing East Sussex NHS general dental services (%), 2016/17 (M)	54	50	58	47	57	48	58	62	54

### GP patient survey

Significance compared to ESBT

Ref	Indicator	ESBT	EHS CCG	HR CCG	Eastbn.	Hailsham & Polegate	Seaford	Bexhill	Hastings & St Leonards	Rural Rother
5.01	Patients responding to the GP Patient Survey (%), 2016/17	46	47	45	43	54	56	51	40	56
5.02	Patients whose experience of their GP surgery was good (%), 2016/17	87	89	85	88	86	94	88	79	95
5.03	Patients whose experience of making appointments was good (%), 2016/17	76	77	76	77	72	83	76	69	92
5.04	Patients satisfied with GP surgery's opening hours (%), 2016/17	79	80	77	80	79	81	76	75	84
5.05	Patients who said the GP was good at involving them in decisions on care (%), 2016/17	75	77	73	76	76	83	77	68	81
5.06	Patients who said the nurse was good at involving them in decisions on care (%), 2016/17	67	68	67	69	65	69	66	67	67

## Appendix 2: Acronyms and abbreviations

A&E	Accident and Emergency
ACS	Ambulatory Care Sensitive
AF	Atrial Fibrillation
ASC	Adult Social Care
BP	Blood Pressure
CAMHS	Child and Adolescent Mental Health Services
CCG	Clinical Commissioning Group
CHD	Coronary Heart Disease
CKD	Chronic Kidney Disease
COPD	Chronic Obstructive Pulmonary Disease
CV	Cardiovascular
CVD	Cardiovascular Disease
DM	Diabetes Mellitus (used for diabetes QOF clinical domain)
DNA	Did Not Attend
DSR	Directly Standardised Rate
DTaP/IPV/Hib	Diphtheria, tetanus, pertussis (whooping cough), polio and Haemophilus influenzae type b (also known as the 5 in 1 vaccine)
EHCP	Education, Health and Care Plan
EHS	Eastbourne, Hailsham and Seaford
ESA	Employment and Support Allowance
ESBT	East Sussex Better Together
EYFS	Early Years Foundation Stage
Hib	Haemophilus influenzae type b
HIV	Human Immunodeficiency Virus
HR	Hastings and Rother
HWLH	High Weald Lewes Havens
ID	Income Deprivation
ID 2015	Indices of Deprivation, 2015
IDACI	Income Deprivation Affecting Children Index
IDAOPi	Income Deprivation Affecting Older People Index
IMD	Index of Multiple Deprivation
JSA	Job Seekers Allowance
LD	Learning Disability
LLTI	Limiting Long-Term Illness
LRTI	Lower Respiratory Tract Infection
LSOA	Lower Super Output Area
MenC	Meningococcal C conjugate
MH	Mental Health
MIU	Minor Injury Unit
MMR	Measles, mumps and rubella
MRC	Medical Research Council

NEET	Not in Education, Employment or Training
PAD	Peripheral Arterial Disease
PCV	Pneumococcal conjugate vaccine
PHOF	Public Health Outcomes Framework
PPV	Pneumococcal polysaccharide vaccine
QOF	Quality and Outcomes Framework
RAG	Red Amber Green
RCP	Royal College of Physicians
SAR	Standardised Attendance Ratio/ Standardised Admissions Ratio
SEN	Special Educational Needs
SMR	Standardised Mortality Ratio
STIs	Sexually Transmitted Infections
UC	Universal Credit